



Tow Out Bar - Light

Manual



Version 1.1

2021

Table of Contents

1. Important instructions / safety	3
2. Packing list	3
3. Basics.....	4
4. Technical specifications	4
4.1 Dimensions:.....	4
4.2 Material:.....	4
4.3 Weight:.....	4
4.4 Tail dolly plate dimensions:	5
4.5 Steel rod dimensions:	5
5. Assembly / disassembly.....	6
6. Use / handling.....	6
7. Warranty	8
8. Revision history.....	9

1. Important instructions / safety



Notes with a warning sign requires a special attention.



Notes with an informative sign provide with useful information.

The Tow Out Bar - Light is designed for ground handling of a glider airplanes as an aid to glider maneuvering. It allows you to tow the glider by a car equipped with a towing connection.

All information is presented for reference only.

Information in this document is subject to change without notice. SoaringXX reserves the right to change or improve their products and to make changes in the content of this material without obligation to notify any person or organization of such changes or improvements.



It is highly recommended to read the manual before assembling and using the Tow Out Bar - Light!



SoaringXX is not liable for any damage caused by a lack of responsibility and improper use of its products.

2. Packing list

The Tow Out Bar - Light package contains the following parts:

- three-piece extendable anodized aluminum profile with a trailer hook,
- galvanized steel tail lifting adapter,
- galvanized steel tail dolly plate



Figure 1: Tow Out Bar parts.

3. Basics

The Tow Out Bar – Light is very compact, sturdy and very light. It is used for a tail lifting – to install the tail dolly and glider towing. It is made out of an anodized aluminum (4mm wall thickness) to ensure a lightweight and sturdy construction. It is a 3-piece telescopically designed so it can be easily stored in the car trunk and when fully extended, long enough to pull all glider types. It can be extended in three different lengths.



This Tow Out Bar is ideal for the Club / 15m / 18m class gliders. It can be used on the heavy tail gliders as well but it is not recommended!



One of the biggest advantages of SoaringXX Tow Out Bar is the SoaringXX engineering of the sliding knob which is sliding on a ball bearing inside of the Aluminum knob and lock automatically at the proper position.

4. Technical specifications

4.1 Dimensions:

- height: 11 cm (without a tail lifting adapter), 48 cm (with a tail lifting adapter),
- width (back part including rod): 43 cm,
- length: 104 cm – 171 (min. – max.)

4.2 Material:

- anodized aluminum,
- galvanized steel,
- plastic,
- carpet (nonwoven geotextile) – 10 mm thickness

4.3 Weight:

- towing bar with a trailer hook: 7200 g,
- tail lifting adapter: 1500 g,
- tail dolly plate: 1200 g (longer tail dolly plate: 1400 g),
- total weight: 9900 g

4.4 Tail dolly plate dimensions:

Tail dolly plate as a standard comes in a shorter dimension – 21cm. If there is a need for a longer tail dolly plate we also have a longer version – 27 cm.

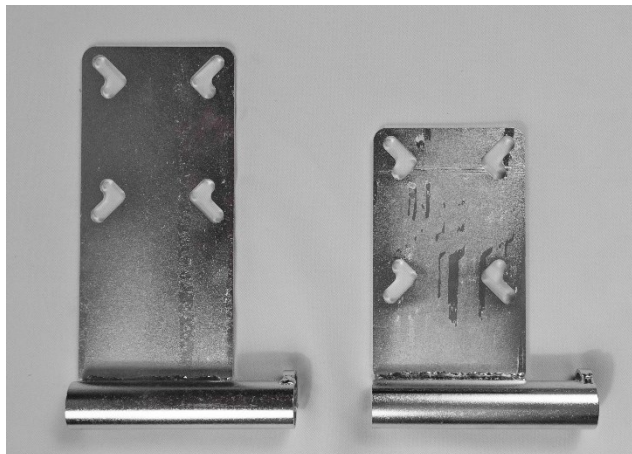


Figure 2: Standard dimension (right) and longer dimension (left) of a tail dolly plate.

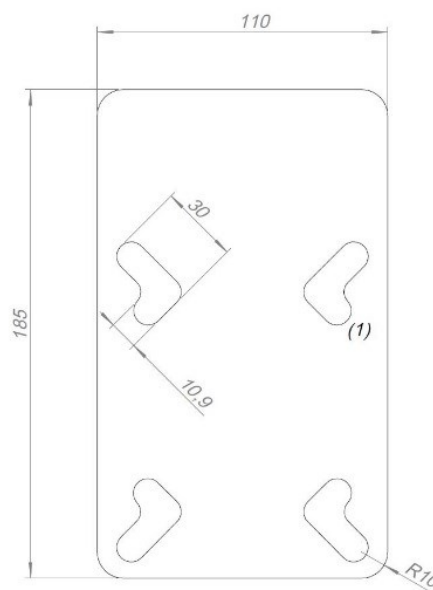


Figure 3: Technical drawing of the tail dolly plate.

4.5 Steel rod dimensions:

The steel rod on the back part of the Tow Out Bar also comes in two different dimensions. As a standard it comes in a shorter dimension - 17 cm (Figure 4 a) which fits to most of the gliders. If there is a special requirement for more distance between the bar and the rudder we have a longer rod - 22 cm (Figure 4 b) optionally.

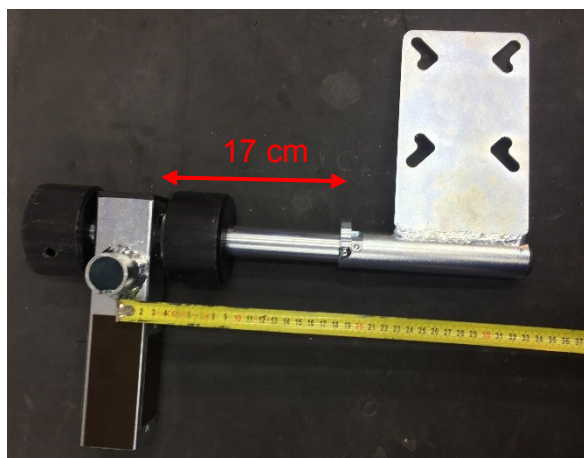


Figure 4 a: Standard dimension of the steel rod.

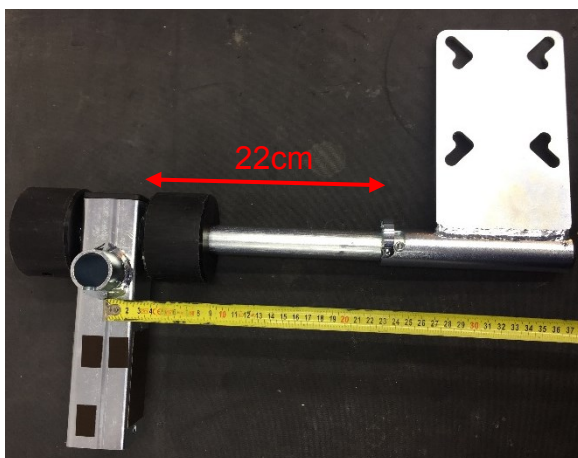
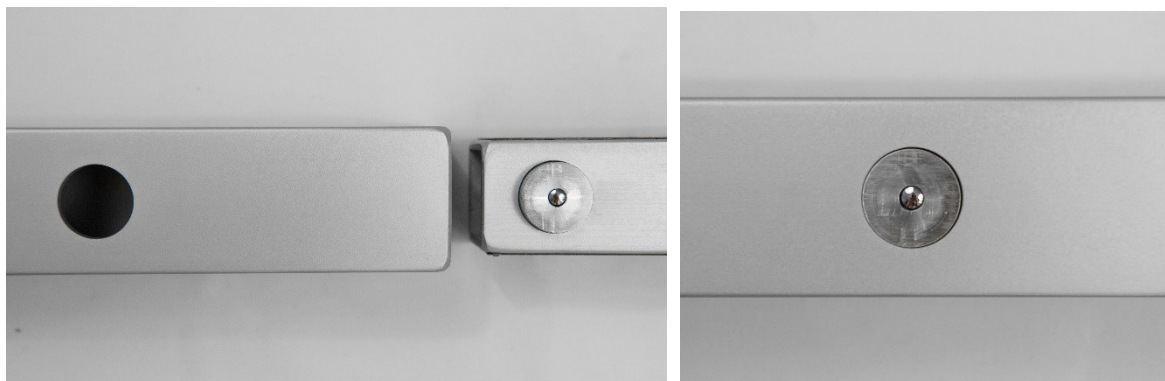


Figure 4 b: Longer version of the steel rod.

5. Assembly / disassembly

Tow Out Bar comes almost fully assembled. The only thing that needs to be assembled is the three-piece extendable profile. Simply push the sliding knob and insert smaller piece of the profile into a bigger one.



Figures 5 and 6: Showing the sliding knob before and after assembly.

6. Use / handling

For easier understanding, please check the following video on the Youtube:

<https://youtu.be/pOmZL8wx7Mc>

Step 1: Tail dolly needs to be modified before using the Tow Out Bar. Simply install the tail dolly plate between the tail dolly body and the castor wheel. The dimensions meet the standardized dimensions of the wheel brackets so the prepared holes fit for all factory delivered tail dollies automatically.

Step 2: Insert the tail lifting adapter into the tube on the upper side of the back part of Tow Out Bar.

Step 3: With a lifting adapter lift the tail of the glider and mount the tail dolly.

Step 4: Connect the towing bar to the tail dolly. To mount/dismount the towing bar simply revolve it up to the angle of 45° and push/pull out from the steel rod on the back part.

Step 5: With a trailer hook connect the Tow Out Bar to the vehicle and it is ready for towing.

Step 6: After glider towing the telescopic towing bar can be shortened for a transport very quickly and easily. Simply push the sliding knob and push together.



Figures 7 – 9: Pictures are showing three different lengths of the Tow Out Bar – Light.



It is not recommended to push the glider with the Tow Out Bar – Light backwards!



Do not drive faster than 10km/h.



Bear in mind that you are towing around 500kg behind the car and all the force is on the Tow Out Bar – Light.

7. Warranty

This SoaringXX product is warranted to be free from defects in materials or workmanship for one year from the date of purchase. Within this period, SoaringXX will, at its sole discretion, repair or replace any components that fail during normal use. Such repairs or replacements will be made at no charge to the customer for parts and labor, provided that the customer is responsible for any transportation cost. This warranty does not cover failures due to abuse, misuse, unauthorized alterations or repairs and accidents.

THE WARRANTIES AND REMEDIES CONTAINED HEREIN ARE EXCLUSIVE AND IN LIEU OF ALL OTHER WARRANTIES EXPRESSED OR IMPLIED OR STATUTORY, INCLUDING ANY LIABILITY ARISING UNDER ANY WARRANTY OF MERCHANTABILITY OR FITNESS FOR A PARTICULAR PURPOSE, STATUTORY OR OTHERWISE. THIS WARRANTY GIVES YOU SPECIFIC LEGAL RIGHTS, WHICH MAY VARY FROM STATE TO STATE. IN NO EVENT SHALL SOARINGXX BE LIABLE FOR ANY INCIDENTAL, SPECIAL, INDIRECT OR CONSEQUENTIAL DAMAGES, WHETHER RESULTING FROM USE, MISUSE, OR INABILITY TO USE THIS PRODUCT OR FROM DEFECTS IN THE PRODUCT.

Some states do not allow the exclusion of incidental or consequential damages, so the above limitations may not apply to you. SoaringXX retains the exclusive right to repair or replace the unit or software, or to offer a full refund of the purchase price, at its sole discretion. SUCH REMEDY SHALL BE YOUR SOLE AND EXCLUSIVE REMEDY FOR ANY BREACH OF WARRANTY.

To obtain warranty service contact SoaringXX directly.

